



## TERMINATION INSTRUCTIONS

### **FO PATCH PANEL OV-A / OV-AT**

19"/1U, 2U

### **FO SPLICE BOX OV-A**

19"/1U



## FO PATCH PANEL OV-A / OV-AT

19"/1U, 2U

1a



Distribution head outside the box with restricted fitting  
**(straight entry)**

1b



Distribution head outside the box with restricted fitting  
**(sloped entry)**

2a



Distribution head outside the box with the lock of the protection tube of the cable distributor  
**(straight entry)**

2b



Distribution head outside the box with the lock of the protection tube of the cable distributor  
**(sloped entry)**

3a



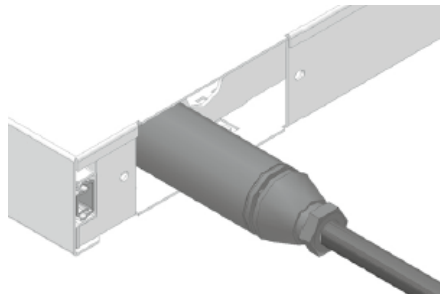
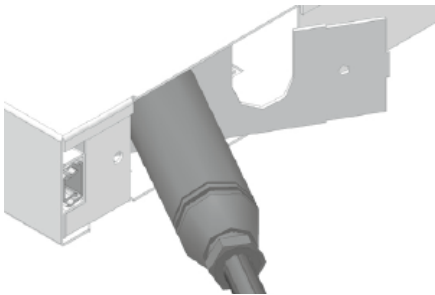
Distribution head inside the box with the split in the distribution head  
**(straight entry)**

3b

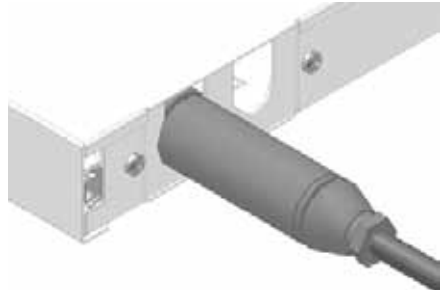
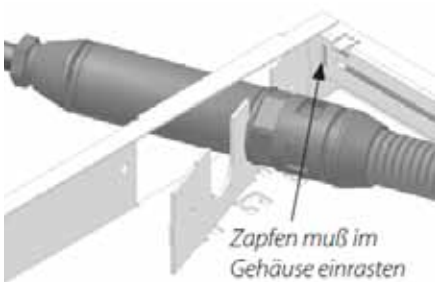


Distribution head inside the box with the split in the distribution head  
**(sloped entry)**

1. The complete box is fixed to the selected position in the 19" frame.
2. Enter the trunk cable with the distribution head from the rear of the box. Attention: The length of the cable behind the fixing in the box shall be a minimum 1.5m. This allows demounting of the box for later re-working.
3. The protection tube is demounted from the distribution head. The single fibre cable with the terminated connectors will not be damaged if the protection tube is carefully pulled back.
4. The distribution head is fixed with the chosen fixture plate (straight or sloped). The cable is taken through the cable guide plate and the cable gland is screwed tight. **Attention:** It is possible to demount the cable entry from the box before mounting the cable.
5. The head including the terminated connectors is pulled from the back side in the chosen position of the box. After them the complete unit (cable distributor and fixture plate) is inserted and fixed (with screws) to the selected position (they are the positions left and right on the back of the box).
6. The box is pulled out and the fibres brought to the right position. The fibres/connectors are labelled.
7. **Attention:** Please follow the cleaning and security regulations.



The box entry with mounted distribution head is sloped insert the slot in the back of the box. Then the head is pulled back.

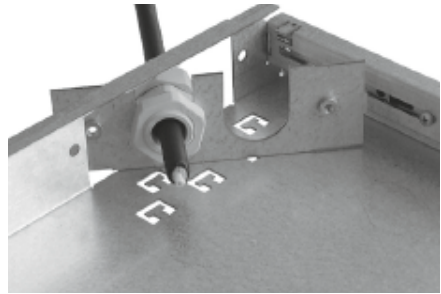
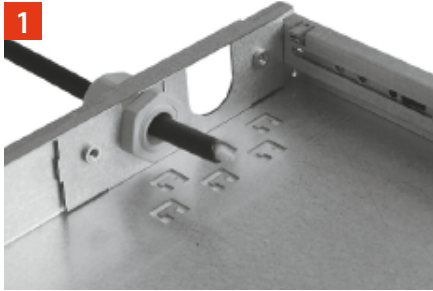


The pin of the cable entry plate must be snapped into the sidewall of the box.



## FO SPLICE BOX OV-A

19"/1U



1. The complete box is fixed to the selected position in the 19" frame.
2. Cable stocks into account, so that the box for future assembly work can be expanded.  
**Attention!** Bundle artery supplies to the desired length apart. (About 1.50 m)
3. Use the right cable gland (PG or metric) and mount on cable.
4. The cable is taken through the cable guide plate and the cable gland is screwed tight.  
**Attention:** It is possible to demounted the cable entry from the box before mounting the cable.
5. The complete entry including the fixed cable is inserted and fixed to the selected position (they are the position left and right on the back of the box).
6. The box is pulled out and taken out for splice works.
7. The lowest splice cassette is for twelve coloured fibres (IEC60304).
8. **Attention:** If you have more than 12 fibres the colour code is repeated.
9. The loose tube and the pigtails are fixed on the splice cassettes with a tie wrap or another fixing method. This must be done without twisting the fibres. To avoid macro bending no pressure must be applied to the fibres.
10. Prepare the loose tube to the right length. Clean the fibres with ultrapure alcohol and take the fibres contrary the fibres of the pigtails in the cassette.
11. Splice the fibres in compliance with the instructions and protect the splice with a crimp or heat shrink splice protector and put the protector in the holder.
12. **Attention:** Please follow the cleaning and security regulations.

### Size ( Cable gland)

M20 / PG11

M25 / PG13,5

### Klemm area

6 - 12 mm



9 - 16 mm



## CABLE ENTRIES

for FO patch panels OV-A / OV-AT



1U	Size	Article No.	Description
	M25	417550	Angled cable entry
	M20	417559	Angled cable entry
	M20 + M25	416994	Straight cable entry
	1x 21 mm + 2x 15 mm	418650	Straight cable entry
	15 mm	418652	Angled cable entry
	21 mm	418654	Angled cable entry
	2x M20	415208	Angled cable entry
2U	Size	Article No.	Description
	M25	417560	Angled cable entry
	M20	417562	Angled cable entry
	M20 + M25	417561	Straight cable entry
	1x 21 mm + 2x 15 mm	418651	Straight cable entry
	15 mm	418653	Angled cable entry
	21 mm	418655	Angled cable entry
	2x M20	415209	Angled cable entry

## ADRESSEN DÄTWYLER GESELLSCHAFTEN / DATWYLER COMPANIES

### SWITZERLAND

#### **Dätwyler Cabling Solutions AG**

Gotthardstrasse 31  
6460 Altdorf  
T + 41 41 875-1268  
F + 41 41 875-1986  
info.cabling.ch@datwyler.com  
www.cabling.datwyler.com

### GERMANY

#### **Dätwyler Cables GmbH**

Auf der Roos 4-12  
65795 Hattersheim  
T + 49 6190 8880-0  
F + 49 6190 8880-80  
info.cabling.de@datwyler.com  
www.cabling.datwyler.com

#### **Dätwyler Cables GmbH**

Lilienthalstraße 17  
85399 Hallbergmoos  
T + 49 811 998633-0  
F + 49 811 998633-30  
info.cabling.de@datwyler.com  
www.cabling.datwyler.com

### AUSTRIA

#### **Dätwyler Cables GmbH**

**Office Austria**  
Tenschertstraße 8  
1230 Wien  
T + 43 1 8101641-0  
F + 43 1 8101641-35  
info.cabling.at@datwyler.com  
www.cabling.datwyler.com

### UNITED ARAB EMIRATES

#### **Datwyler Middle East FZE**

P. O. Box 263480  
Office No. 601, 6th Floor, Jafza 19 View  
Jebel Ali Free Zone  
Dubai  
T + 971 4 8810239  
F + 971 4 8810238  
info.cabling.ae@datwyler.com  
www.cabling.datwyler.com

#### **Datwyler Cabling Solutions LLC**

Unit 1004 & 1005, 10th Floor, IB Tower  
Business Bay  
Dubai  
T + 971 4 4228129  
F + 971 4 4228096  
info.cabling.ae@datwyler.com  
www.cabling.datwyler.com

### CHINA

#### **Datwyler Cables+Systems**

**(Shanghai) Co. Ltd**  
Building 16, No. 111,  
Kang Qiao Dong Road  
Kang Qiao Industrial Zone, Pudong  
Shanghai, 201319  
T + 86 21 6813-0066  
F + 86 21 6813-0298  
info.cabling.cn@datwyler.com  
www.cabling.datwyler.com

#### **Datwyler (Suzhou)**

**Cabling Systems Co. Ltd**  
Block 31, 15# Dong Fu Road  
Suzhou Singapore Industrial Park  
Suzhou, 215123  
T + 86 512 6265-3600  
F + 86 512 6265-3650  
harnessing.cabling.cn@datwyler.com  
www.cabling.datwyler.com

### SINGAPORE

#### **Datwyler (Thelma)** **Cables+Systems Pte Ltd**

29 Tech Park Crescent  
638103 Singapore  
T + 65 68631166  
F + 65 68978885  
info.cabling.sg@datwyler.com  
www.cabling.datwyler.com